

A woman with blonde hair in a ponytail, wearing a light-colored tank top and green leggings, is in a gym. She is adjusting a weight stack on a piece of exercise equipment. The background is filled with various gym machines and weights, creating a bokeh effect.

EX *Exigo*[®]

S70 STORAGE
EXIGO-UK.COM



CONTACT

WEB: www.exigo-uk.com

SALES: 0870 850 1822

INT'L: +44 (0) 1706 633 560

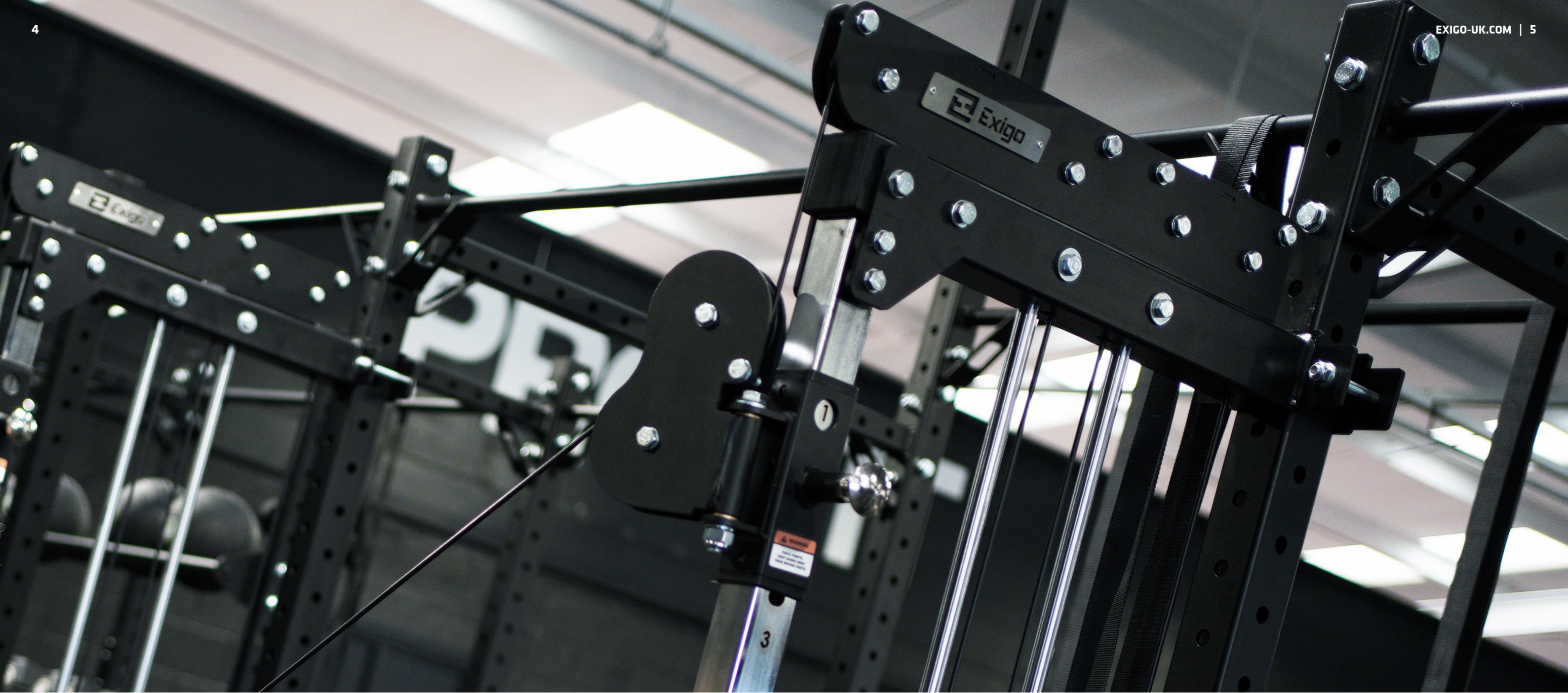
EMAIL: sales@exigo-uk.com

CONTENTS

ABOUT US	4
CERTIFICATIONS	5
MADE IN BRITAIN	6
OUR PROCESS	8

S70 STORAGE	10
STORAGE OPTIONS	12
COLOUR OPTIONS	18
WARRANTY	19





ABOUT US

Established in 1995 by Founder and Managing Director Darren Golden, Exigo is the largest commercial gym equipment manufacturer in the UK and are recognised as a major source of quality products within the fitness industry. In more than 20 countries worldwide and an unrivalled product portfolio across Strength, Functional and Boxing.

1995
ESTABLISHED

30 000ft²
MANUFACTURING FACILITY

+300
PRODUCTS

+20
COUNTRIES

5000ft²
R&D FACILITY

CERTIFICATIONS

Exigo has attained ISO 9001:2015 for quality management standards, and our products are fully compliant with the current EN 957 and EN ISO 20957 Stationary Training Equipment standards.

Exigo are also an accredited CHAS Contractor. The industry-leading health & safety contractor certification in the UK.



MADE IN BRITAIN

Exigo is renowned for manufacturing gym equipment and our commitment to excellence. We own our own product design, testing and manufacturing facility based in the UK, and are in full control of our own production and processes.

BRITISH STEEL

All Exigo products are produced with British Steel. Our 100x50x3 ERW flat sided oval, is produced in the UK to BSEN 10305-3:2010 specification.

BUILT TO LAST

At Exigo we understand purchasing gym equipment is a big investment, therefore all our products are built to last and are backed by an industry leading main frame lifetime warranty.

QUALITY CONTROL

Our products are subject to rigorous in house testing, ensuring they are fit for purpose to meet the demands and expectations of our customers.

CONTINUAL DEVELOPMENT

We are constantly creating and developing. Our culture of continuous improvement, innovation and learning permeates the entire organisation and means that we never stand still.

OUR MISSION

We aim to provide a source of quality products and services that meet or exceed your expectations. You will find Exigo to be among the leading suppliers of products, support and services available in the industry today, yet you will not find us the most expensive. More of what you want for much less than you would expect to pay.

We recruit the very best welders and fabricators and provide genuine opportunities for them to develop their skills and move on within the business. As part of our commitment to quality, all Exigo products are supported by an industry leading lifetime frame and weld guarantee.

DESIGN. MANUFACTURE. INSTALLATION.

The ability to control our manufacturing processes, means that we can design and custom-build commercial gym equipment to a level that our customers tell us is unrivalled in the industry.

// 01

JUST IN TIME COMPONENTS

Through third party supplier agreements we are now able to reduce our lead times down to a maximum of 7 days for any materials required.

// 02

PICK COMPONENTS

Using our bespoke production planning system, work can be accurately scheduled and all components are picked on demand.

// 03

TUBE MANIPULATION

The first stage of manufacturing requires us to bend and manipulate steel using one of our four CNC tube bending machines.

// 04

MIG WELDING

Our team of highly skilled welders can then assemble and weld all parts using MIG welding.

// 05

POLYESTER POWDER COAT

Products then go through a two stage cleaning and phosphate treatment process, before a polyester powder coat is applied.

// 06

ASSEMBLY & INSPECTION

Exigo products are pre-assembled and inspected prior to packing and despatch.

// 07

FLAT PACKED

Exigo products ship flat packed, the appropriate packaging not only ensures your goods arrive safely and securely but can also help to reduce shipping and transport costs.

// 08

DELIVERY & INSTALLATION

Our experienced installation team is dedicated to providing an excellent service and will ensure your install runs smoothly and your equipment is set up correctly.

S70 STORAGE

Exigo S70 Storage is perfect to maximise space in your facility with a flexible choice of storage options for various accessories. Available in multiple sizes to create your ideal solution which can always be adapted as your facility or accessory needs grow. Our Internal storage options are fixed between two uprights to create storage bays and our external storage options are mounted on the outside of your rack or storage bay.

AVAILABLE POSITIONS

Refer to the table on each item as shown to understand where each storage option can be placed.

- 4** POSITION 4
- 3** POSITION 3
- 2** POSITION 2
- 1** POSITION 1

3 POSITIONS REQUIRED.

Some storage options use more than one position. Refer to the indicators as to determine which items occupy multiple positions.

INTERNAL

Internal means the item must be fixed between two uprights.

EXTERNAL

External means the item is mounted on the outside of an upright.

EXIGO S70 3 POSITION UPRIGHT

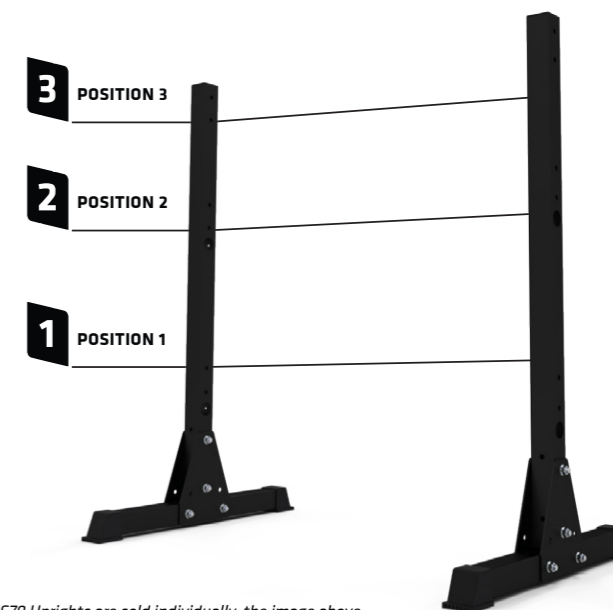
S70-2005

The Exigo S70 3 Position Upright* allows up to 3 internal storage options, and up to 2 external storage options on the left and right side of a single or multiple bay storage unit.

*A minimum of 2 uprights are required, +1 extra upright for every additional bay. Bays are available in 1100mm and 1760mm widths.

3 POSITIONS AVAILABLE.

INTERNAL STORAGE	LENGTH mm (inch)	WIDTH mm (inch)	HEIGHT mm (inch)
1100	784 (31)	1235 (49)	1319 (52)
1760	784 (31)	1895 (75)	1319 (52)



S70 Uprights are sold individually, the image above is for demonstration purposes only.

EXIGO S70 4 POSITION UPRIGHT

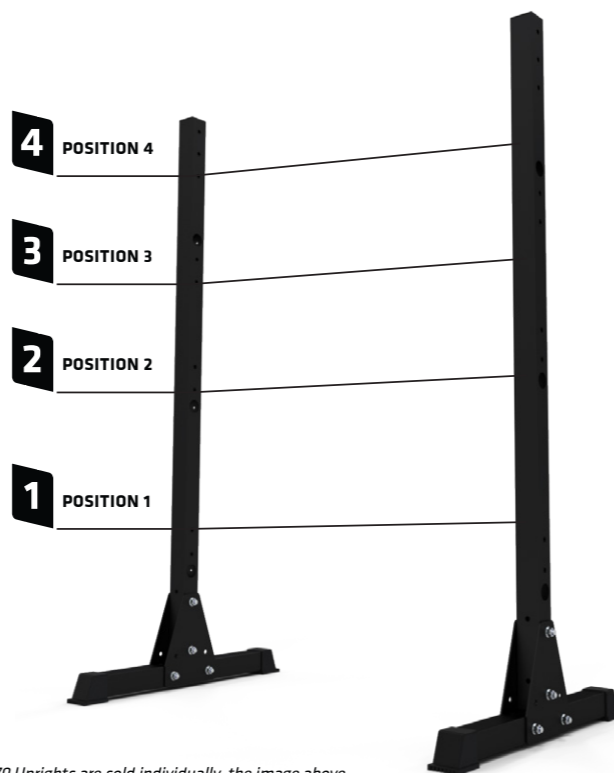
S70-2010

The Exigo S70 4 Position Upright* allows up to 4 internal storage options, and up to 2 external storage options on the left and right side of a single or multiple bay storage unit.

*A minimum of 2 uprights are required, +1 extra upright for every additional bay. Bays are available in 1100mm and 1760mm widths.

4 POSITIONS AVAILABLE.

INTERNAL STORAGE	LENGTH mm (inch)	WIDTH mm (inch)	HEIGHT mm (inch)
1100	784 (31)	1235 (49)	1719 (68)
1760	784 (31)	1895 (75)	1719 (68)



S70 Uprights are sold individually, the image above is for demonstration purposes only.

EXIGO S70 2 POSITION UPRIGHT

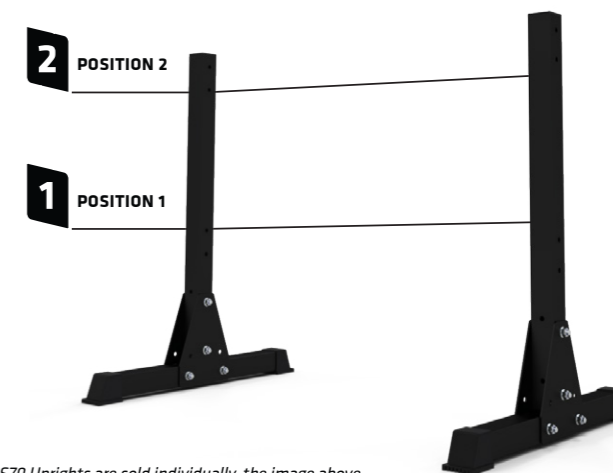
S-2000

The Exigo S70 2 Position Upright* allows up to 2 internal storage options, and up to 1 external storage option on the left and right side of a single or multiple bay storage unit.

*A minimum of 2 uprights are required, +1 extra upright for every additional bay. Bays are available in 1100mm and 1760mm widths.

2 POSITIONS AVAILABLE.

INTERNAL STORAGE	LENGTH mm (inch)	WIDTH mm (inch)	HEIGHT mm (inch)
1100	784 (31)	1235 (49)	989 (39)
1760	784 (31)	1895 (75)	989 (39)



S70 Uprights are sold individually, the image above is for demonstration purposes only.

INTERNAL STORAGE OPTIONS

INTERNAL **3 POSITIONS REQUIRED.**

EXIGO RESISTANCE BAND RAIL

1100: S-2195 | 1760: S-2200

Occupies 3 positions and can only be placed in position 4. Available in two sizes and can be used to store resistance bands or similar items such as skipping ropes.

Accessories not included.



AVAILABLE POSITIONS

- 4** POSITION 4
- 3** REQUIRED
- 2** REQUIRED
- 1** NOT COMPATIBLE

SIZE	CAPACITY	WEIGHT
1100	A range of Resistance Bands	6 kg (14 lbs)
1760	A range of Resistance Bands	10 kg (22 lbs)

INTERNAL **3 POSITIONS REQUIRED.**

EXIGO MAT HANGER

1100: S-2175 | 1760: S-2180

Occupies 3 positions and can only be placed in position 4. Available in two sizes and is designed to store 1.2m long exercise mats.

Accessories not included.



AVAILABLE POSITIONS

- 4** POSITION 4
- 3** REQUIRED
- 2** REQUIRED
- 1** NOT COMPATIBLE

SIZE	CAPACITY	WEIGHT
1100	Approx 20 Exercise Mats	5 kg (12 lbs)
1760	Approx 40 Exercise Mats	7 kg (16 lbs)

INTERNAL **1 POSITION REQUIRED.**

EXIGO DUMBBELL/KETTLEBELL TRAY

1100: S-2145 | 1760: S-2150

Occupies only 1 position and can be placed in positions 1, 2 or 3. Available in two sizes and can be used to store dumbbells or kettlebells.

Accessories not included.



AVAILABLE POSITIONS

- 4** NOT COMPATIBLE
- 3** POSITION 3
- 2** POSITION 2
- 1** POSITION 1

SIZE	CAPACITY	WEIGHT
1100	Approx 3 pairs of Dumbbells Approx 8 Kettlebells	11 kg (25 lbs)
1760	Approx 7 pairs of Dumbbells Approx 16 Kettlebells	16 kg (36 lbs)

INTERNAL **1 POSITION REQUIRED.**

EXIGO DUMBBELL RAIL WITH SADDLES

1100: S-2135 | 1760: S-2140

Occupies only 1 position and can be placed in positions 1, 2 or 3. Available in two sizes and is used to store dumbbells.

Accessories not included.



AVAILABLE POSITIONS

- 4** NOT COMPATIBLE
- 3** POSITION 3
- 2** POSITION 2
- 1** POSITION 1

SIZE	CAPACITY	WEIGHT
1100	2 pairs of Dumbbells	18 kg (40 lbs)
1760	4 pairs of Dumbbells	28 kg (62 lbs)

INTERNAL **1 POSITION REQUIRED.**

EXIGO 1760 STUDIO BAR STORAGE

S-2210

Occupies only 1 position and can be placed in any of the 4 available positions. Only available for 1760 storage bays and is designed to hold studio barbells.

Accessories not included.



AVAILABLE POSITIONS

- 4** POSITION 4
- 3** POSITION 3
- 2** POSITION 2
- 1** POSITION 1

CAPACITY	WEIGHT
Approx 20 Studio Bars	8 kg (18 lbs)

INTERNAL **1 POSITION REQUIRED.**

EXIGO STUDIO PLATE RAIL

1100: ES-2185 | 1760: ES-2190

Occupies only 1 position and can be placed in any of the 4 available positions. Available in two sizes and is used to store small studio plates.

Accessories not included.



AVAILABLE POSITIONS

- 4** POSITION 4
- 3** POSITION 3
- 2** POSITION 2
- 1** POSITION 1

SIZE	CAPACITY	WEIGHT
1100	Approx 20 Studio Weight Plates	6 kg (14 lbs)
1760	Approx 35 Studio Weight Plates	10 kg (22 lbs)

INTERNAL **1 POSITION REQUIRED.**

EXIGO LARGE TRAY

1100: S-2125 | 1760: S-2130

Occupies only 1 position and can be placed in positions 1, 2 or 3. Available in two sizes and can be used to store various accessories of your choice.

Accessories not included.



AVAILABLE POSITIONS

- 4** NOT COMPATIBLE
- 3** POSITION 3
- 2** POSITION 2
- 1** POSITION 1

SIZE	CAPACITY	WEIGHT
1100	Various accessories	11 kg (25 lbs)
1760	Various accessories	22 kg (49 lbs)

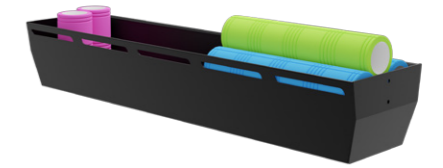
INTERNAL **1 POSITION REQUIRED.**

EXIGO LARGE BIN

1100: S-2115 | 1760: S-2120

Occupies 1 position and can only be placed in position 1. Available in two sizes and can be used to store various accessories of your choice.

Accessories not included.



AVAILABLE POSITIONS

- 4** NOT COMPATIBLE
- 3** NOT COMPATIBLE
- 2** NOT COMPATIBLE
- 1** POSITION 1

SIZE	CAPACITY	WEIGHT
1100	Various accessories	23 kg (51 lbs)
1760	Various accessories	32 kg (71 lbs)

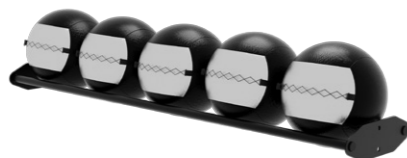
INTERNAL **1 POSITION REQUIRED.**

EXIGO 300 BALL RAIL

1100: S-2165 | 1760: S-2170

Occupies only 1 position and can be placed in any of the 4 available positions. Available in two sizes and is used to store oversized medicine balls.

Accessories not included.



AVAILABLE POSITIONS

- 4** POSITION 4
- 3** POSITION 3
- 2** POSITION 2
- 1** POSITION 1

SIZE	CAPACITY	WEIGHT
1100	3 Oversized Medicine Balls	8 kg (18 lbs)
1760	5 Oversized Medicine Balls	10 kg (22 lbs)

INTERNAL **1 POSITION REQUIRED.**

EXIGO 200 BALL RAIL

1100: S-2155 | 1760: S-2160

Occupies only 1 position and can be placed in any of the 4 available positions. Available in two sizes and is used to store medicine balls.

Accessories not included.



AVAILABLE POSITIONS

- 4** POSITION 4
- 3** POSITION 3
- 2** POSITION 2
- 1** POSITION 1

SIZE	CAPACITY	WEIGHT
1100	4 Medicine Balls	7 kg (16 lbs)
1760	6 Medicine Balls	9 kg (20 lbs)

INTERNAL **1 POSITION REQUIRED.**

EXIGO TOAST RAIL

1100: S-2100 | 1760: S-2105

Occupies 1 position and can only be placed in position 1. Available in two sizes and is designed to store weight plates.

Accessories not included.



AVAILABLE POSITIONS

- 4** NOT COMPATIBLE
- 3** NOT COMPATIBLE
- 2** NOT COMPATIBLE
- 1** POSITION 1

SIZE	CAPACITY	WEIGHT
1100	Approx 250kg (10 x 25kg Plates)	12 kg (27 lbs)
1760	Approx 450kg (18 x 25kg Plates)	17 kg (38 lbs)

INTERNAL

EXIGO TOAST RAIL TRAY

S-2110

Only compatible with the 1760 Toast Rail and is added to create a solid base for alternative accessories. Up to 3 can be added.

Toast Rail & Accessories not included.



AVAILABLE POSITIONS

- 4** N/A
- 3** N/A
- 2** N/A
- 1** N/A

CAPACITY	WEIGHT
Various accessories	8 kg (18 lbs)

EXTERNAL STORAGE OPTIONS

EXTERNAL

EXIGO SIDE MAT HANGER
SINGLE: S-2300 | DOUBLE: S-2301

Occupies all 4 external positions and can only be placed in position 4. Available in two sizes and mounted on the outside of an upright to store exercise mats up to 1.6m long.

Accessories not included.



4 POSITIONS REQUIRED.

AVAILABLE POSITIONS

- 4** POSITION 4
- 3** REQUIRED
- 2** REQUIRED
- 1** REQUIRED

SIZE	CAPACITY	WEIGHT
SINGLE	Approx 20 Exercise Mats	5 kg (11 lbs)
DOUBLE	Approx 40 Exercise Mats	10 kg (22 lbs)

EXTERNAL

EXIGO CORNER MAT HANGER
S-2305

Occupies all 4 external positions and can only be placed in position 4. Stores exercise mats up to 1.6m long and allows your bay to be placed in the corner of a room.

Accessories not included.



4 POSITIONS REQUIRED.

AVAILABLE POSITIONS

- 4** POSITION 4
- 3** REQUIRED
- 2** REQUIRED
- 1** REQUIRED

CAPACITY	WEIGHT
Approx 20 Exercise Mats	7 kg (16 lbs)

EXTERNAL

EXIGO BATTLE ROPE STORAGE
S-2325

Occupies all 4 external positions and can only be placed in position 4. Mounted on the outside of an upright and is used to store battle ropes.

Accessories not included.



4 POSITIONS REQUIRED.

AVAILABLE POSITIONS

- 4** POSITION 4
- 3** REQUIRED
- 2** REQUIRED
- 1** REQUIRED

CAPACITY	WEIGHT
Approx 1 Battle Rope	2 kg (5 lbs)

EXTERNAL

EXIGO VERTICAL DUMBBELL RACK
S-2310

Occupies 3 external positions and can only be placed in position 3. Mounted on the outside of an upright and is used to store dumbbells.

Accessories not included.



3 POSITIONS REQUIRED.

AVAILABLE POSITIONS

- 4** POSITION 4
- 3** POSITION 3
- 2** REQUIRED
- 1** REQUIRED

CAPACITY	WEIGHT
3 pairs of Dumbbells	10 kg (22 lbs)

EXTERNAL

EXIGO 400 SIDE BALL STORAGE
S-2315

Occupies 2 external positions and can be placed in positions 1 or 3. Mounted on the outside of an upright and is used to store Swiss Balls.

Accessories not included.



2 POSITIONS REQUIRED.

AVAILABLE POSITIONS

- 4** REQUIRED
- 3** POSITION 3
- 2** REQUIRED
- 1** POSITION 1

CAPACITY	WEIGHT
1 Swiss Ball	4 kg (9 lbs)

EXTERNAL

EXIGO SIDE BIN
S-2320

Occupies 2 external positions and can be placed in positions 1 or 3. Mounted on the outside of an upright and is used to store small accessories of your choice.

Accessories not included.



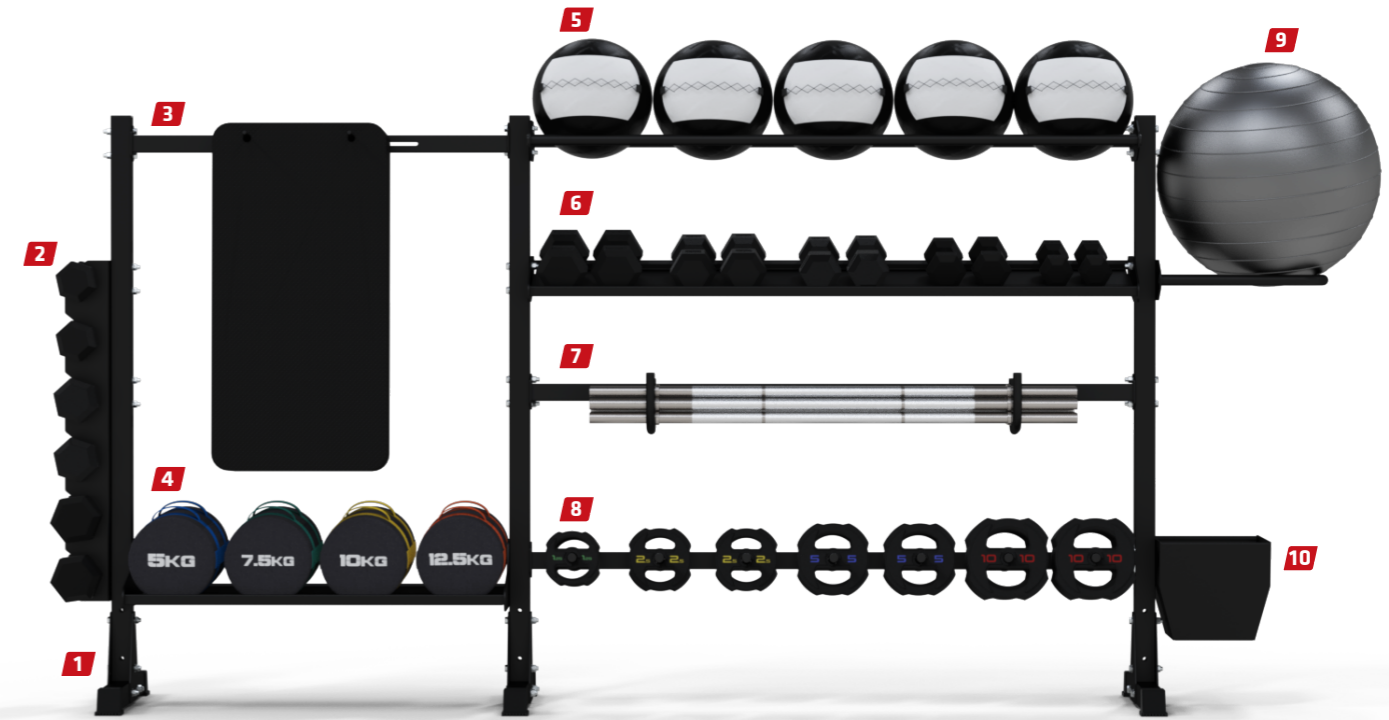
2 POSITIONS REQUIRED.

AVAILABLE POSITIONS

- 4** REQUIRED
- 3** POSITION 3
- 2** REQUIRED
- 1** POSITION 1

CAPACITY	WEIGHT
Various small accessories	12 kg (27 lbs)





1 S70 4 POSITION UPRIGHT

SKU: S-2010
QTY: 3

2 SIDE MAT HANGER

SKU: S-2300
SIZE: SINGLE
POSITION: 4
PLACEMENT: EXTERNAL

3 200 BALL RAIL

SKU: S-2160
SIZE: 1760
POSITION: 4
PLACEMENT: INTERNAL

4 KETTLEBELL TRAY

SKU: S-2150
SIZE: 1760
POSITION: 3
PLACEMENT: INTERNAL

5 DUMBBELL RAIL (INC SADDLES)

SKU: S-2140
SIZE: 1760
POSITION: 2
PLACEMENT: INTERNAL

6 TOAST RAIL

SKU: S-2105
SIZE: 1760
POSITION: 1
PLACEMENT: INTERNAL

7 TOAST RAIL TRAY

SKU: S-2210
SIZE: N/A
POSITION: N/A
PLACEMENT: N/A

8 RESISTANCE BAND RAIL

SKU: S-2195
SIZE: 1100
POSITION: 4
PLACEMENT: INTERNAL

9 LARGE BIN

SKU: S-2115
SIZE: 1100
POSITION: 1
PLACEMENT: INTERNAL

10 BATTLE ROPE STORAGE

SKU: S-2325
SIZE: N/A
POSITION: 4
PLACEMENT: EXTERNAL

1 SIDE BIN

SKU: S-2010
QTY: 3

2 VERTICAL DUMBBELL RACK

SKU: S-2310
SIZE: N/A
POSITION: 3
PLACEMENT: EXTERNAL

3 MAT HANGER

SKU: S-2175
SIZE: 1100
POSITION: 4
PLACEMENT: INTERNAL

4 LARGE TRAY

SKU: S-2125
SIZE: 1100
POSITION: 1
PLACEMENT: INTERNAL

5 300 BALL RAIL

SKU: S-2170
SIZE: 1760
POSITION: 4
PLACEMENT: INTERNAL

6 DUMBBELL TRAY

SKU: S-2150
SIZE: 1760
POSITION: 3
PLACEMENT: INTERNAL

7 1760 STUDIO BAR STORAGE

SKU: S-2210
SIZE: 1760
POSITION: 2
PLACEMENT: INTERNAL

8 STUDIO PLATE STORAGE

SKU: S-2190
SIZE: 1760
POSITION: 1
PLACEMENT: INTERNAL

9 400 SIDE BALL STORAGE

SKU: S-2315
SIZE: N/A
POSITION: 3
PLACEMENT: EXTERNAL

10 SIDE BIN

SKU: S-2320
SIZE: N/A
POSITION: 1
PLACEMENT: EXTERNAL

COLOUR OPTIONS

/ 01

PRIMARY COLOUR

Choose the primary colour of your equipment, this is applied to the the uprights.

/ 02

SECONDARY COLOUR

Choose the secondary colour of your equipment, this is applied to grip points, joining sections and attachments.

/ 03

UPHOLSTERY COLOUR

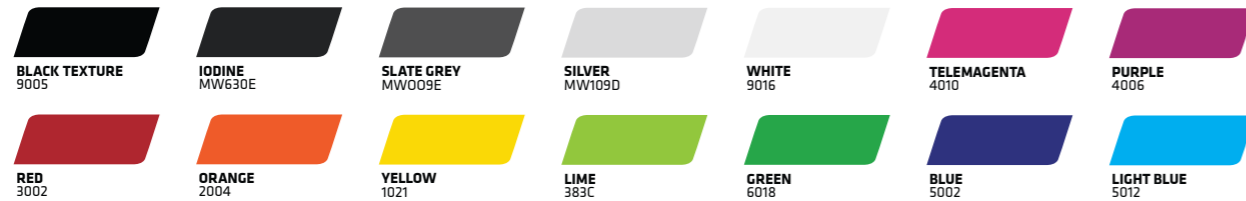
Choose the upholstery colour for your equipment if applicable.

/ 04

CUSTOM BRANDING

Add your gym, team or organisation logo to your equipment.

STANDARD FRAME COLOURS



TEXTURED FRAME COLOURS



STANDARD UPHOLSTERY COLOURS



Actual upholstery colours may vary slightly from visuals. Other colours available on request.

COLOUR MATCH EXISTING EQUIPMENT

In addition to our standard frame colours, we're able to match your existing equipment or specific RAL/Pantone colour.

WARRANTY

All Exigo products are warrantied to be free from defects in materials and workmanship. Exigo warrants to the original purchaser of all new equipment purchased from an Exigo authorized dealer or from an Exigo manufacturing contractor or directly from Exigo, that these products be warrantied under normal use and used in a manner in which the product(s) was specifically designed for, used as intended and in areas designed suitable for that use and service. The shipping of parts replaced or product replaced under warranty to be determined by Exigo. Parts replaced under warranty carry the original remaining warranty period or 90 days whichever is longer.

GENERAL WARRANTIES.

Strength, Selectorized, Plate Loaded, Olympic Stations, Strength and conditioning / Storage, Functional Range and Attachments.

LIFETIME WARRANTY.

Main Frame, Structural Steel and Welds.

TWO YEAR WARRANTY.

Linear Bearings, Linear Shafts, Bronze Bushings, Sealed Rotating Bearings and Pulley Wheel, Top Plate, Weight Plates, Selector Shaft, Weight Stack Guide Rods and Pulley Wheel Housings. Lifting Rack Attachments, Functional Rig Attachments and all Rack Attachments in Olympic Series.

ONE YEAR WARRANTY.

Spring Loaded Pins, Selector Pin Cables and Cable Parts, Handles, End Caps, Rubber lifting Mats (within Integrated Lifting Platforms, Rubber Surface Tiles, Oak Centres and Lifting Platform Underboards and all other components not mentioned elsewhere in this warranty.

180 DAY WARRANTY.

Normal parts of wear including but not limited to Labels, Upholstered Pads, Excluding Wear, Wraps and Embroidery.

EXCLUSIONS, OMISSIONS & INDEMNITY.

Exigo have no liability nor shall this limited warranty apply with respect to:

- Products not manufactured by Exigo or by an authorized Exigo manufacturing contractor.
- Products which have been altered without express written consent from Exigo
- Products purchased other than directly from Exigo or through an authorized Exigo dealer
- Defective coatings caused by environmental conditions including but not limited to climate conditions, cleaning materials and lubricants not specified by Exigo and moisture or humidity including perspiration.
- The defect occurs as a result of use other than fair wear and tear, wilful or negligent damage or the use of the product other than the purpose for which it is intended.
- Products not maintained in compliance with Exigo specifications shown in the relevant owner's manual and on product labels. Unreadable or altered serial tag.
- Mounting surface or substrate mounting of Exigo wall mounted units, sections or attachments. Exigo is expressly indemnified against selection of; or use of fixings for wall units or attachment to or fixing to inappropriate or inadequate surface mounting points.

Exigo shall not be liable for any special, incidental contingent, consequential damages or otherwise arising out of or in connection with a claim for any economic losses including but not limited to damage of loss of property or equipment and loss profits and revenue, loss of goodwill or reputation, anticipated or otherwise. Exigo aggregate liability for loss or damage shall in any event be limited to a sum equal to the amount paid for the products in one instance.

Exigo reserve the right under any claim to repair or replace the product as they deem fit and may elect.

BOXING EQUIPMENT.

FIVE YEAR WARRANTY.

Boxing Ring, Main Frame

ONE YEAR WARRANTY.

Canvas Skirts, Corner Pads, All Consumables, Steel Works (Brackets)

180 DAY WARRANTY.

Punch Bags, Gloves & Mitts, Ring Boards, Ropes, Tensioners

90 DAY WARRANTY.

Underlay

OUTDOOR EQUIPMENT.

FIVE YEAR WARRANTY.

Main Frame, Structural Steel and Welds (excluding coatings) against structural failure due to corrosion or defects in workmanship

ONE YEAR WARRANTY.

Linear Bearings, Linear Shafts, Bronze Bushings

90 DAY WARRANTY.

Spring Loaded Pins, Selector Pin Cables and Cable Parts, Handles, End Caps

30 DAY WARRANTY.

Normal parts of wear including but not limited to Labels, Upholstered Pads, Excluding Wear, Wraps and Embroidery.



©2024 Exigo. All Rights Reserved.